

H23012 – Sparkle with Red Wine



Gluten	Soya	Peanuts	Nuts	Sesame	Lupin	Milk	Eggs	Sulphites	Celery	Mustard	Fish	Molluscs	Crustacean
<b>Mandatory allergens contains:</b>													
✓	✓	z	z	z		✓	✓	✓	z				
<b>Key</b>													
✓	Listed in ingredients												
z	May contain traces												

**Product Name:** Ventopuro Reserva Cabernet Sauvignon 75cl (13.5%)

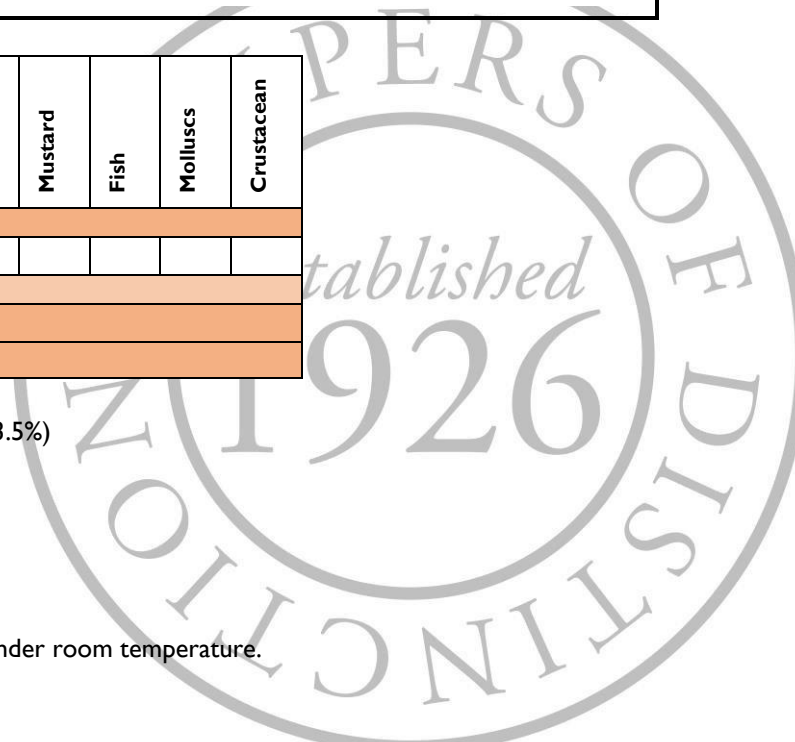
**Ingredients:** Contains **SULPHITES**.

**Allergens:** For allergens, see ingredients in **CAPITALS**.

**Storage:** Keep the wine bottle out of direct sunlight and stored under room temperature.

**Typical Value per 100g**

<b>Energy (kj):</b>	N/A
<b>Energy (kcal):</b>	N/A
<b>Fat (g):</b>	N/A
<b>Fat of which saturates (g):</b>	N/A
<b>Carbohydrate (g):</b>	N/A
<b>Carbohydrate of which sugars (g):</b>	N/A
<b>Protein (g):</b>	N/A



<b>Salt (g):</b>	N/A
------------------	-----

**Product Name:** Bon Bon's All Butter Fudge 100g

**Ingredients:** Sugar, Salted Butter (16%) (**MILK**, Salt), Sweetened Condensed **MILK** (**MILK**, Sugar), Glucose Syrup, Golden Syrup.

**Allergens:** For allergens, see ingredients in **CAPITALS**. May contain traces of **NUTS**, **PEANUTS** and **WHEAT**.

**Storage:** Store in a cool, dry place.

**Typical Value per 100g**

<b>Energy (kj):</b>	1908
<b>Energy (kcal):</b>	454
<b>Fat (g):</b>	16
<b>Fat of which saturates (g):</b>	11
<b>Carbohydrate (g):</b>	77
<b>Carbohydrate of which sugars (g):</b>	71
<b>Protein (g):</b>	1.2
<b>Salt (g):</b>	0.3

**Product Name:** Jacquot Classic Truffles 200g

**Ingredients:** Vegetable Fats (Palm Kernel, Palm), Sugar, Low Fat Cocoa Powder (17%), **LACTOSE**, Emulsifier: Sunflower Lecithin, Natural Vanilla Flavouring.

**Allergens:** For allergens, see ingredients in **CAPITALS**. May contain cereals containing **GLUTEN** and **NUTS**.

**Storage:** Keep in a cool and dry place (18°C to 20°C).

**Typical Value per 100g**

<b>Energy (kj):</b>	2472
<b>Energy (kcal):</b>	595
<b>Fat (g):</b>	44
<b>Fat of which saturates (g):</b>	34
<b>Carbohydrate (g):</b>	43
<b>Carbohydrate of which sugars (g):</b>	41
<b>Protein (g):</b>	3.9
<b>Salt (g):</b>	0.01

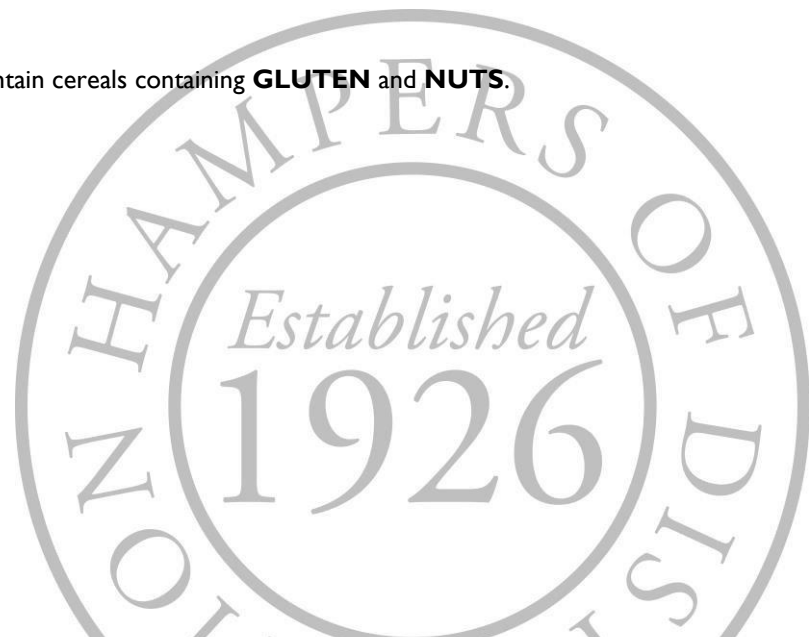
**Product Name:** Buiteman's Gouda Biscuits 75g

**Ingredients:** **WHEAT** Flour (**GLUTEN**), Matured Gouda Cheese 29% (**MILK**, Potato, Starch, Salt, Starter Culture, Rennet, Colour: E160b(ii); Beta- Carotene, Preservative: E251), Vegetable Oils (Rapeseed, Palm), Barn **EGG**, Yeast, Dried **MILK**, Salt, Sugar, Emulsifier: E471, Modified Potato Starch, Spices, Yeast Extract, Colour: Paprika Extract, Acidity Regulator: Citric Acid, Natural Flavouring.

**Allergens:** For allergens, see ingredients in **CAPITALS**. May contain traces of **NUTS**, **SESAME**, **CELERY** and **SOYA**.

**Storage:** Store in a cool, dry place.

**Typical Value per 100g**



<b>Energy (kj):</b>	2307
<b>Energy (kcal):</b>	554
<b>Fat (g):</b>	36
<b>Fat of which saturates (g):</b>	16
<b>Carbohydrate (g):</b>	43
<b>Carbohydrate of which sugars (g):</b>	1.2
<b>Protein (g):</b>	13
<b>Salt (g):</b>	2.3

**Product Name:** Eternal Grocer Dark Chocolate Coated Shortbread 70g

**Ingredients:** Flour (**WHEAT** Flour, Calcium, Niacin, Iron, Thiamin), Vegetable Oils (Sustainable Palm, Rapeseed), Sugar, Dark Chocolate (15%) (Cocoa Mass, Sugar, Cocoa Butter, Emulsifier: **SOYA** Lecithin; Natural Vanilla Flavouring), Raising Agent: Sodium Hydrogen Carbonate; Water.

**Allergens:** For allergens, see ingredients in **CAPITALS**. May also contain **MILK, EGG** and **TREE NUTS**.

**Storage:** Store in a cool, dry place out of direct sunlight. Once opened, keep in an airtight container and consume within two weeks.

**Typical Value per 100g**

<b>Energy (kj):</b>	2268
<b>Energy (kcal):</b>	542
<b>Fat (g):</b>	27.9
<b>Fat of which saturates (g):</b>	9.2
<b>Carbohydrate (g):</b>	67.3
<b>Carbohydrate of which sugars (g):</b>	29.1
<b>Protein (g):</b>	4.3
<b>Salt (g):</b>	0.98

**Product Name:** Reids Spiced Fruit Shortbread 150g

**Ingredients:** **WHEAT** Flour (With Calcium Carbonate, Iron, Niacin, Thiamin), Butter (**MILK**, Salt), Sugar, Sultanas (6%), Cornflour, Mixed Spices (1%) (Ground Ginger, Ground Cinnamon).

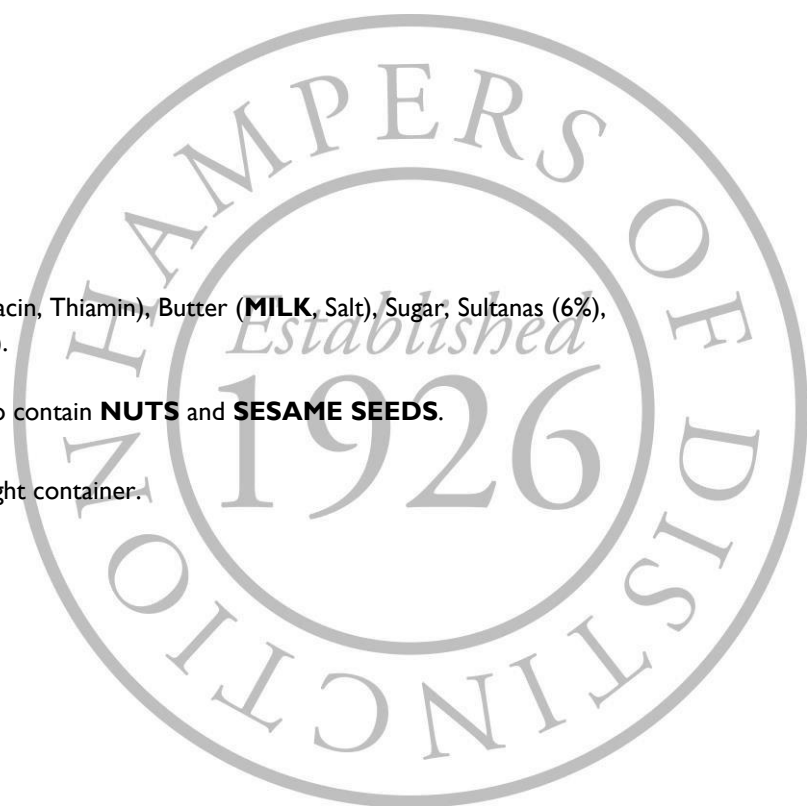
**Allergens:** For allergens, see ingredients in **CAPITALS**. May also contain **NUTS** and **SESAME SEEDS**.

**Storage:** Store in a cool, dry place. Once opened, keep in an airtight container.

**Typical Value per 100g**

<b>Energy (kj):</b>	2205
<b>Energy (kcal):</b>	527
<b>Fat (g):</b>	27.8
<b>Fat of which saturates (g):</b>	17.3
<b>Carbohydrate (g):</b>	63.4
<b>Carbohydrate of which sugars (g):</b>	24
<b>Protein (g):</b>	4.7
<b>Salt (g):</b>	0.6

**Product Name:** Thornton & France Milk Chocolate Bar 80g



**Ingredients:** Colombian **MILK** Chocolate (86%) (Sugar, Cocoa Butter, Cocoa Mass, **MILK** Powder, Emulsifier: **SOYA** Lecithin; Flavouring: Natural Vanilla), Colombian White Chocolate (12%) (Sugar, Cocoa Butter, **MILK** Powder, Emulsifier: **SOYA** Lecithin; Flavouring: Vanilla Extract), Gold Sugar Decoration (2%) (Sugar, **WHEAT** Starch, Glucose Syrup, Colours: E101, E172; Glazing Agent: Shellac). **MILK** Chocolate contains Cocoa Solids 41% minimum, **MILK** Solids 19% minimum. White Chocolate contains Cocoa Solids 35% minimum, **MILK** Solids 24% minimum.

**Allergens:** For allergens, see ingredients in **CAPITALS**. May contain traces of **NUTS** and **PEANUTS** and **EGG**.

**Storage:** Store in a cool, dry place.

**Typical Value per 100g**

<b>Energy (kj):</b>	2385
<b>Energy (kcal):</b>	570
<b>Fat (g):</b>	38
<b>Fat of which saturates (g):</b>	23
<b>Carbohydrate (g):</b>	52
<b>Carbohydrate of which sugars (g):</b>	48
<b>Protein (g):</b>	7
<b>Salt (g):</b>	0.18

**Product Name:** Thornton & France White Choc Star with Sprinkles 50g

**Ingredients:** (96%) Colombian White Chocolate (Cocoa Butter 35% Minimum, **MILK** Solids 24% Minimum) (Sugar, Cocoa Butter, **MILK** Powder, Emulsifier: **SOYA** Lecithin; Vanilla Extract), (4%) Gold Sugar Decoration (Sugar, **WHEAT** Starch, Glucose Syrup, Colours: E101, E171, E172; Glazing Agent: Shellac).

**Allergens:** For allergens, see ingredients in **CAPITALS**. May contain traces of **NUTS** and **PEANUTS**.

**Storage:** Store in a cool, dry place.

**Typical Value per 100g**

<b>Energy (kj):</b>	2387.83
<b>Energy (kcal):</b>	570.45
<b>Fat (g):</b>	38.31
<b>Fat of which saturates (g):</b>	22.76
<b>Carbohydrate (g):</b>	52.47
<b>Carbohydrate of which sugars (g):</b>	51.34
<b>Protein (g):</b>	6.73
<b>Salt (g):</b>	0.25

